

'I am immensely proud of the contribution St Mary's makes in providing an excellent foundation for high academic achievement within the context of a rich Catholic environment. I look forward to the real benefits our exciting development will offer to current and future generations of pupils and others in the wider community who will use our facilities'

Harvey Rands, Chair of Trustees.

## How to Give

By cheque or bank transfer — Please see separate Donation Form.

If you wish to remain anonymous please make this clear at the point of giving.

**Every donation is important to us.**



**ST MARY'S SCHOOL**  
H A M P S T E A D

47 Fitzjohn's Ave London NW3 6PG

T: 020 7435 1868 F: 020 7794 7922 Bursar 020 7435 1568

Design: JWA/ID 01753 646300



We've been looking everywhere to see how best to expand our school



**ST MARY'S SCHOOL**  
H A M P S T E A D



### **Our new development- Angela Rawlinson** (Headmistress)

St Mary's School is fortunate to occupy an original Grade 2 listed building with beautiful green surroundings and a wonderful outdoor learning environment. Additional space is now needed so that we can deliver more effectively, the dynamic and growing curriculum which will equip our students to thrive in the 21st century.

Our vision is to make St Mary's a learning community where all will be inspired to reach their full potential. At the heart of our development is the desire to provide dedicated learning spaces for our children to embrace the very best of both established and innovative teaching methods.

In order to maintain our current playground area we are building partly underground and developing the roof as a play space. The new building will feature a multi functional performance and teaching space, eco classrooms, new administration areas, changing rooms and other facilities.

I hope you will all support and join in my enthusiasm at this exciting moment for the school.

### **Please help us to reach our target**

Work commenced in September 2008 and completion is expected to be at the end of 2009. The total project will cost in the region of £2.75m. We seek your support to meet a target of £250,000 to contribute to the building cost and ensure that it is equipped and furnished to the very latest specifications.

We hope that all St Mary's parents and pupils, current and past and other friends of the school will wish to contribute to the funding of this exciting project. Every donation, whatever the amount, will be very much appreciated and will go directly to our target 'wish list', so working to benefit not only the education of every current and future child at the school, but also the local community who will be able to access our new facilities at appropriate times.

### **What we will do for you**

- Personally acknowledge every gift in writing with our thanks;
- List the names of all donors in our St Mary's School Appeal 2009 Donors Book - or respect your anonymity if you prefer;
- Ensure that your donations are used wisely and for the purposes for which you intended them;
- Offer to record your donation in an appropriate manner.

### **Gift Aid**

If you are a UK income tax payer, you can currently increase the value of your donation by 28p for every £1 you donate and reduce your income tax liability if you are a higher rate tax payer.

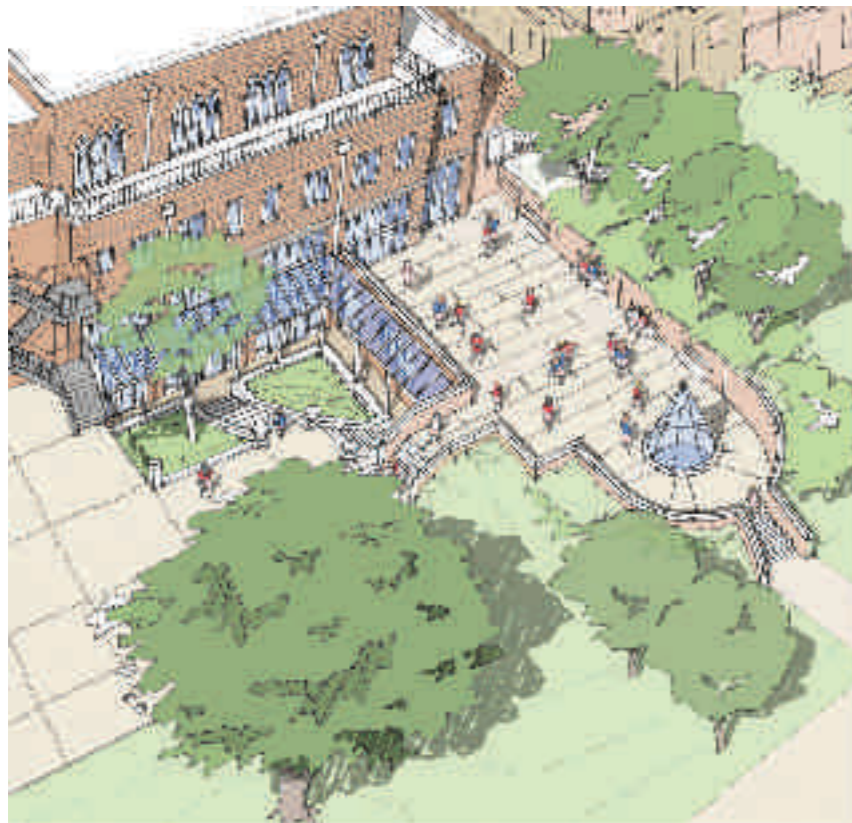
The Gift Aid element of your donation will be donated to the Mary Ward Children's Home in Kwekwe, Zimbabwe which is operated by the Congregation of Jesus, the Order which founded St Mary's and ran the school until 1992.

'Every penny raised will be of immense help in supporting the orphaned and neglected children, regardless of race, nationality or religion, by giving them a home and hope for their future.'

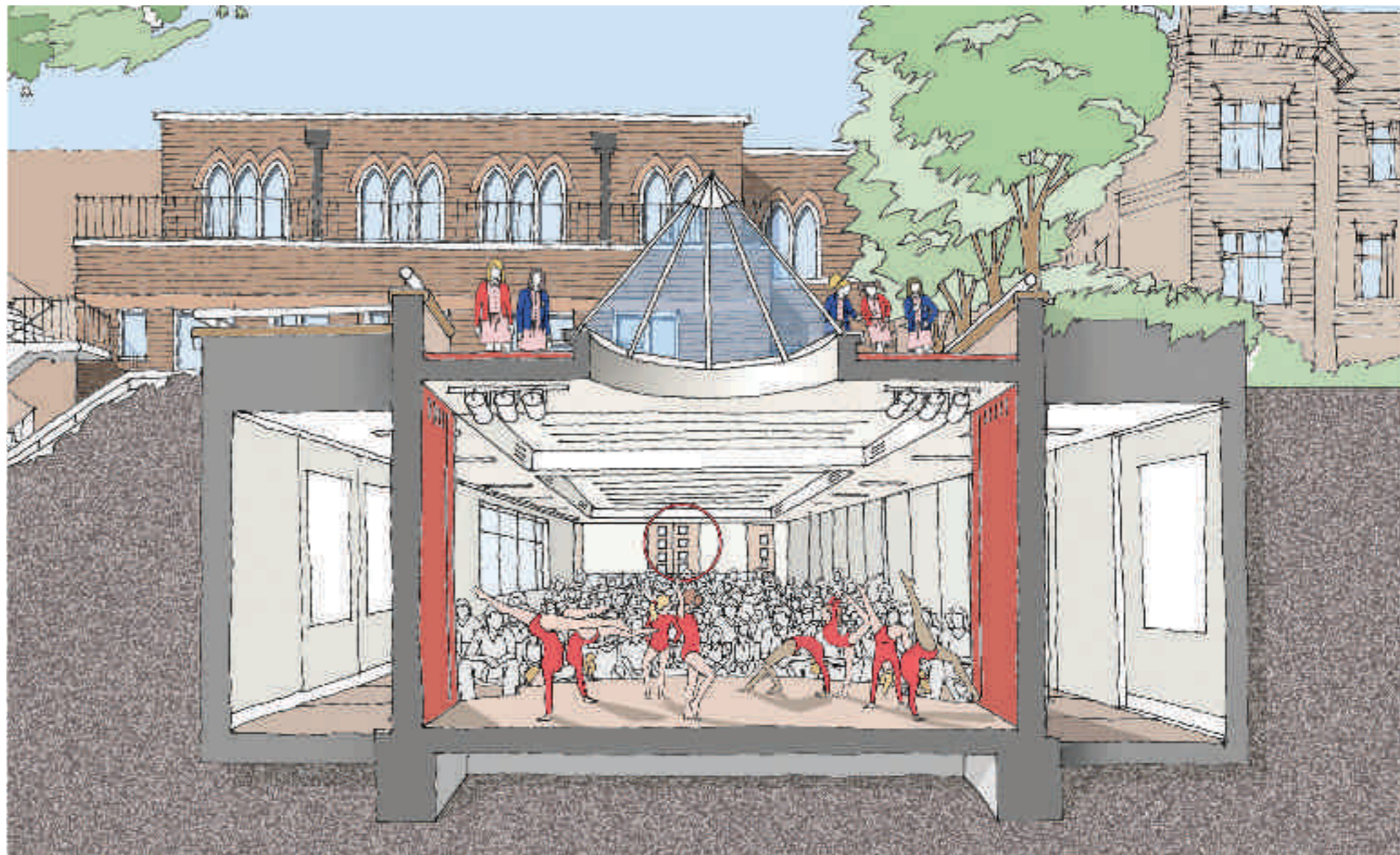
Sister Jane Livesey, Provincial Superior for the Congregation of Jesus.

As a higher rate tax payer, a donation of £1,000 to our fundraising appeal would be worth £1,280, enabling us to pass on £280 for the benefit of the Mary Ward Children's Home and only costing you £750, as your tax liability would be offset by £250.

All that is necessary is to complete the Gift Aid Declaration on the Donation Form and return it to us.



Architect's aerial impression of the new development.



Architect's section of the new development.